

Exhibit At The PPAI Expo 2026

The PPAI Expo Rates

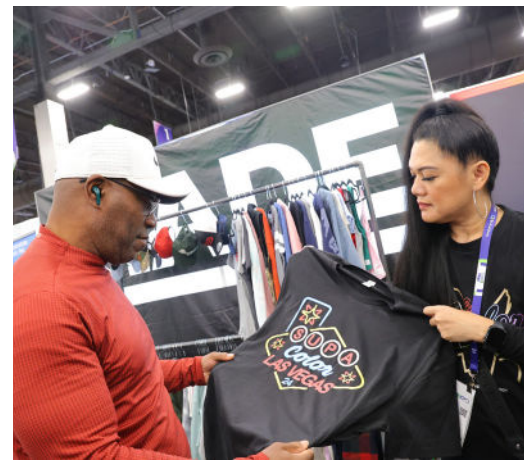
As of 02.20.25

*Rate exclusive for companies that exhibited at The PPAI Expo 2025

	Onsite At The PPAI Expo 2025*	Through May 23, 2025*	Through May 23, 2025	May 18 - Oct 31, 2025	After Oct 31, 2025
Member, Full Payment	\$2,845*	\$2,945*	\$3,095	\$3,445	\$3,745
Member, Deposit Plan	\$2,945*	\$3,045*	\$3,195*	\$3,545*	-
Qualified Non-Member	\$3,845*	\$3,945*	\$4,095	\$4,445	\$4,745

Special Booth Configuration Pricing

- Preferred Space** - 6% of total booth fee (as noted on floorplan)
- Corner** -12% of total booth fee (corner booth is defined as a booth exposed to an aisle on two sides.)
- Island** -15% of total booth fee (400 sq ft min.)
- Peninsula** -12% of total booth fee (400 sq ft min.)
- Aisle Carpet Span** -12% of total booth fee (600 sq ft min.)
- Elevated Aisle Span** -12% of total booth fee (600 sq ft min.)
- Extended Height** -12% of total booth fee
- Hanging Sign** -12% of total booth fee (Only if booth is an island, peninsula or aisle span)



STANDARD



Sandy Mendoza
972.258.3019 | SandyM@ppai.org
Account Manager



Mark Rykoj
972.258.3027 | MarkR@ppai.org
Account Manager

PROFESSIONAL

Heather Mangold
972.258.3051 | HeatherM@ppai.org
Strategic Account Manager

BUSINESS SERVICES

QUALIFIED TO EXHIBIT

Connie Brazil
972.258.3064 | ConnieB@ppai.org
Channel Development Manager,
Business Services

